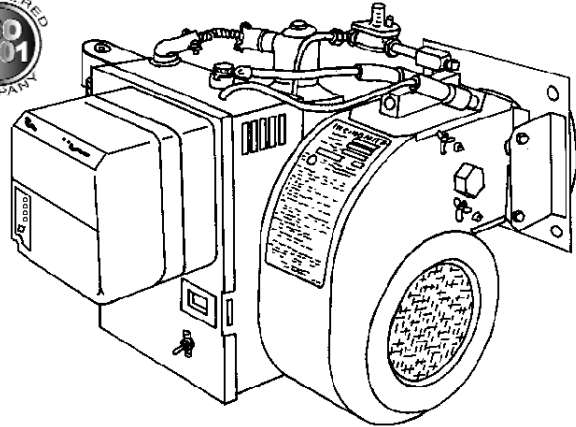


Replacement Parts List

Model Incinomite J81A-3 & J121A-3



*Installation Manual 8470 70
Date code 293 or later*

- Supersedes Model J81-3 and J121-3 which featured a horizontal style control box and wire wound spark transformer.
- Features a modified control box and Honeywell Q652 solid state Spark Generator
- Model J121A Ignitor Assembly features an air adjustment screw to modify gas/air ratios for improved pilot light offs with air shutters full open.
- First production May 10, 1993 (date code 1993).
- After approximately 6-months, date code 4693, the Primary Control was converted from Honeywell RA890F to Honeywell RM7890.

IMPORTANT: Availability of parts as well as specifications are subject to change without notice. Please consult factory for item availability.

AVOID ERROR IN PARTS SELECTION. When ordering, use complete MIDCO part number and description. Furnish burner model number, bill of material number and date code from specification plate.



Midco[®]
INTERNATIONAL

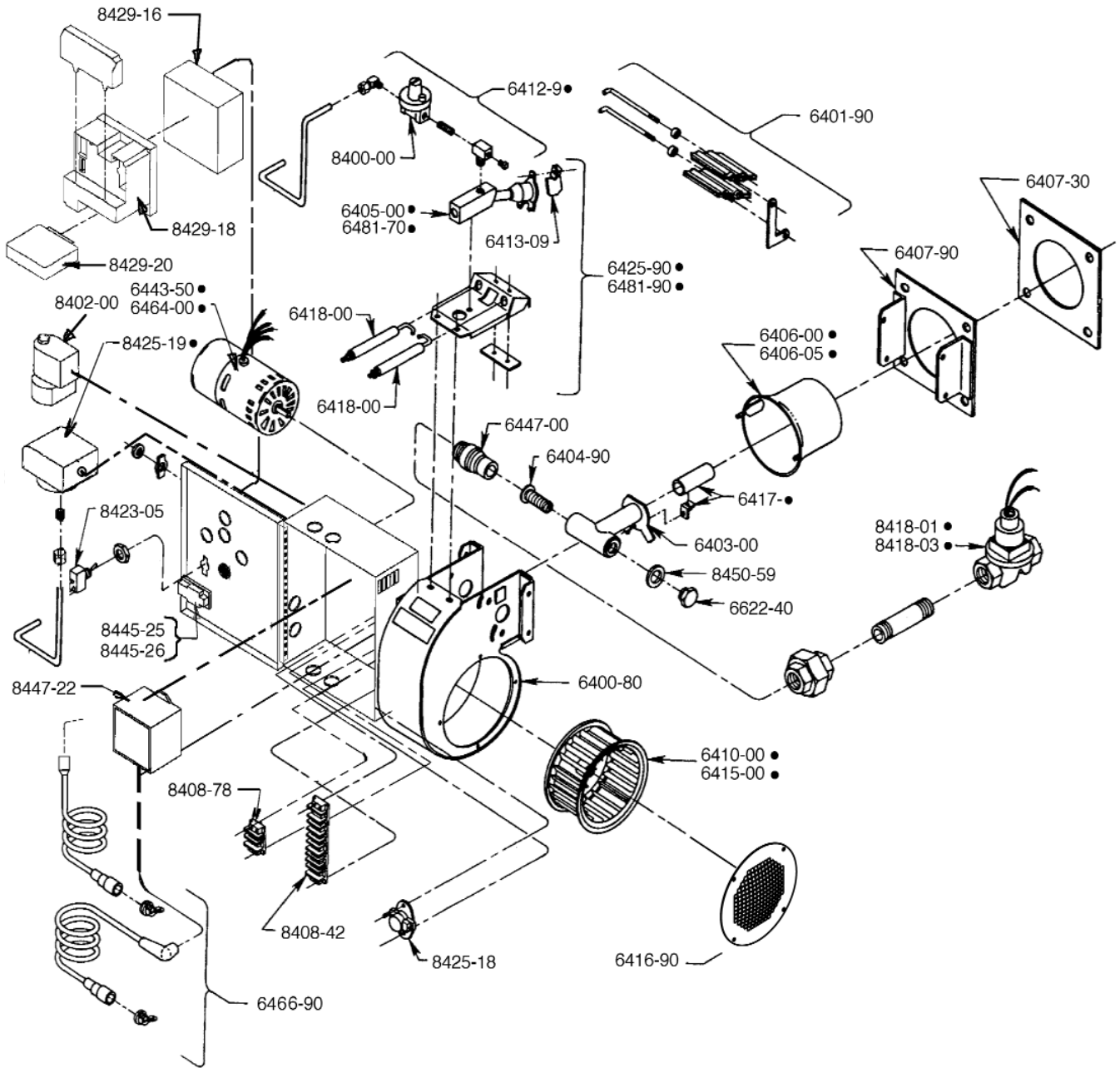
Midco[®] International Inc.

4140 West Victoria Street
Chicago, Illinois 60646
tel 773.604.8700
fax 773.604.4070
web www.midcointernational.com
e-mail sales@midco-intl.com

Quality Designed for Proven Performance

602
8472 59
Printed in USA

J81A-3 & J121A-3 Exploded View



J81A-3 & J121A-3 Parts List

<i>Part #</i>	<i>Description</i>	<i>Part #</i>	<i>Description</i>
6400-80	Blower Housing Replacement Kit (order Blower Wheel, Motor, Shutters, Inlet Screen, Manifold, etcetera, separately)	6425-90	Ignitor Assembly—J81A-3
6401-90	Shutter Replacement Kit	6443-50 ¹	Motor 1/6 HP 115/230/1/50/60 TEFC —J121A-3 only
6403-00	Manifold	6447-00	Input Stop Nipple
6404-90	Input Adjuster Screw Assembly	6464-00	Motor Shaded Pole J81A-3 (Fasco U63-7163-7601)
6405-00	Ignitor Gas Inlet Block, Tube and Ignitor Tip Assembly—J81A-3	6466-90	Electrode Wires, Boots and Strain Reliefs
6406-00	Blast Tube—J121A-3	6481-70	Ignitor Gas inlet Block, Tube and Ignitor Tip Assembly—J121A-3
6406-05	Blast Tube—J81A-3	6481-90	Ignitor Assembly—J121A-3
6407-30	Flange Gasket	6622-40	Input Adjuster Cap
6407-90	Mounting Flange Replacement Kit (order Gasket separately)	8400-00	Ignitor Regulator 1/8" NPT (Maxitrol RV12, RV12LT)
6410-00	Blower Wheel—J81A-3	8402-00	1/8" NPT Ignitor Solenoid Valve—120/1/60
		8408-42	10 position Terminal Strip
		8408-78	3-position Terminal Strip
		8418-01	3/4" NPT Gas Valve 120/1/60—J181A-3 (ITT K3A452S)
		8418-03	1" NPT Gas Valve 120/1/60—J121A-3 (ITT K3A462S)
		8423-05	On-Off Toggle Switch
		8425-18	Thermal Switch (T-O-D 60T-13-203420)
		8425-19	Blower Air Switch—J121A-3
		8429-16	Subbase for Flame Safeguard (M-HQ7800B)
		8429-18	Flame Safeguard (M-H RM7890A)
		8429-20	Rectification Amplifier 0.8 second response time (M-H R7847A)
		8445-25	Latch Body
		8445-26	Latch Body Snap clip
		8447-22	Ignitor Spark Generator (M-H Q652B)
		8450-59	Input Adjuster Sealing Gasket
		2030701 ²	PROPANE Conversion Kit - J81A-3
		2030702 ²	NATURAL Conversion Kit - Nat to LP -J81A-3
		2030801 ²	PROPANE Conversion Kit - J121A-3
		2030802 ²	NATURAL Conversion Kit - Nat to LP -J121A-3

IGNITOR CONTROL PIPING

Assembly includes Brass Orifice Tee (with drilled Orifice), Pressure Tap, Regulator and Compression Fitting

6412-95	J81A-3 NATURAL—#55 Drill (.052)
6412-96	J121A-3 NATURAL—#50 Drill (.070)
6412-97	J81A-3 PROPANE #58 Drill (.042)
6412-98	J121A-3 PROPANE #52 Drill (.063)
6413-09	Ground Barrier Kit
6415-00	Blower Wheel—J121A-3
6416-90	Inlet Ring and Screen Replacement Kit
6417-50	Main Gas Port and Tube Kit—J81A-3 PROPANE
6417-52	Main Gas Port and Tube Kit—J81A-3 NATURAL or J121A-3 PROPANE
6417-54	Main Gas Tube Kit—J121A-3 NATURAL
6418-00	Electrode (spark or flame) - 2 required

NOTES

- Up to September 17, 1993 (date code 3793), a single voltage 115V motor was standard construction. Starting September 20, 1993 (date code 3893), a dual voltage 115/230V motor became standard construction. Replacement motor will be dual voltage. (Instruction bulletin 8470-32 is included.)
- Not illustrated.

